



The Mobile Device And The Wireless Future

John Stefanac
President, Southeast Asia & Pacific



Computer in your **pocket**

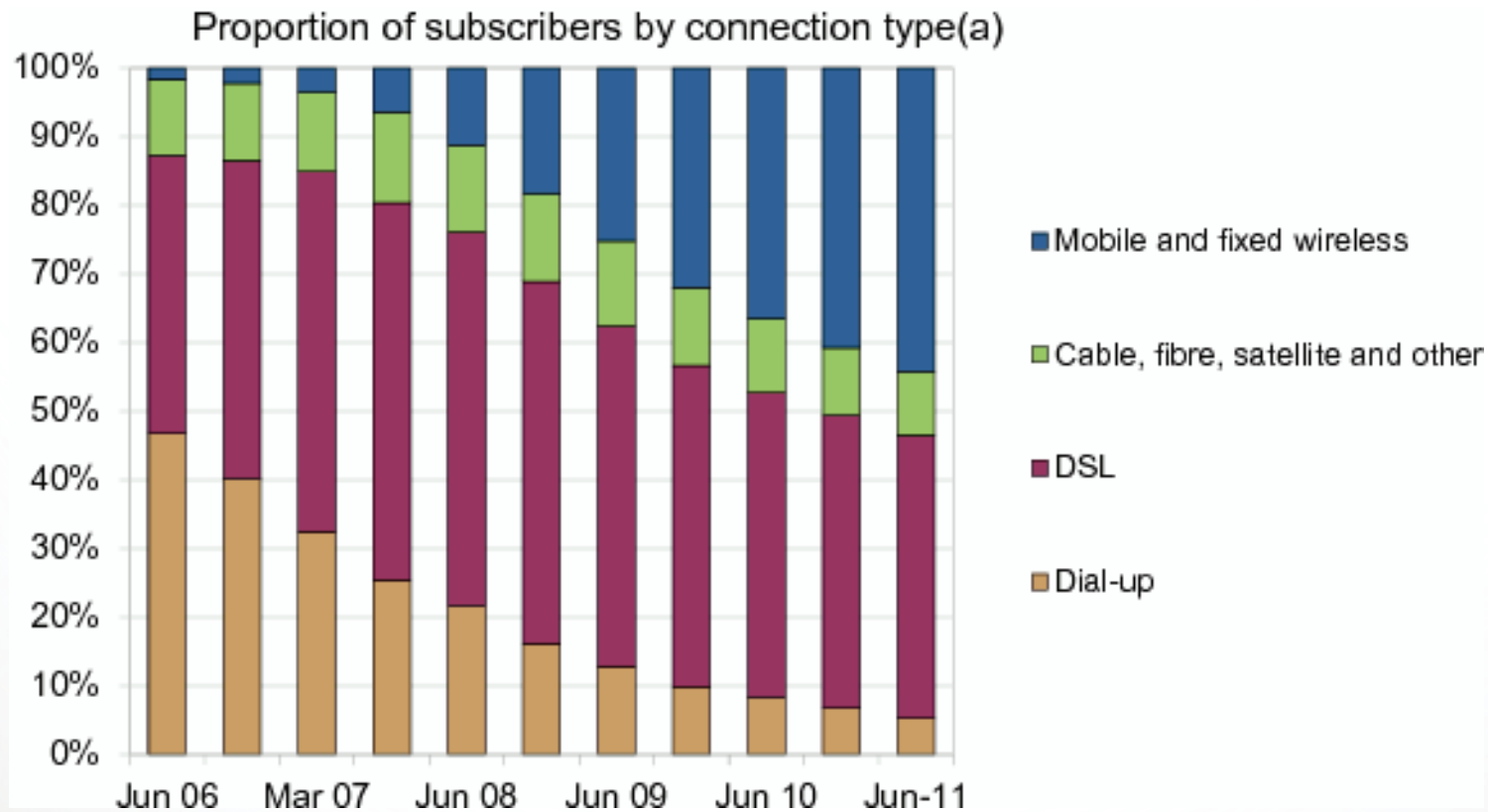


5.3B
Mobile
Subscribers

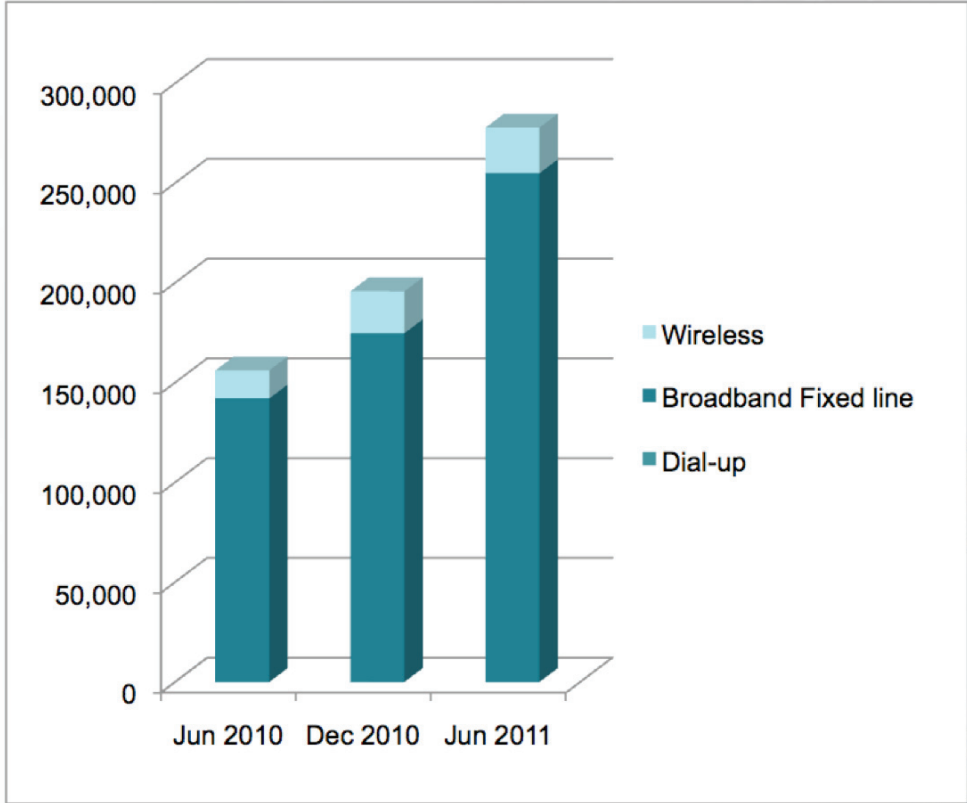
The **Biggest**
Platform in
the History
of Mankind



* Source: [International Telecommunication Union](#) (October 2010)



44% of Internet connections were from a mobile wireless device.

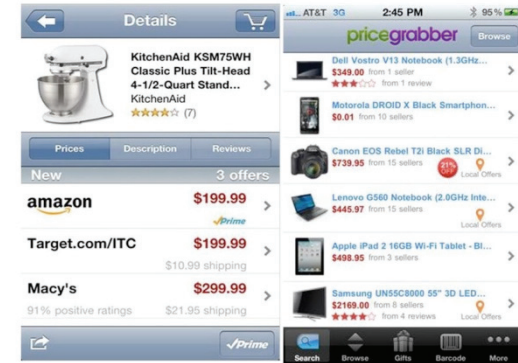


2x Wireless Data
Growth
2010-2011



5x





What are you
doing on
devices?





**ALWAYS-ON
CONNECTIVITY**



**ALL-DAY
BATTERY LIFE**



INSTANT ON



**LOCATION
AWARE**



**MULTIMEDIA
PERFORMANCE**



**UNPRECEDENTED
POWER & SPEED**









Beyond **people.** Internet of everything



Coverage

Spectrum

Backhaul



One more thing about spectrum

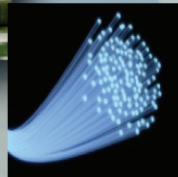
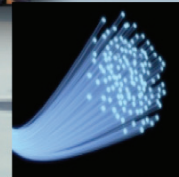
Technologies should be **complementary**



urban



suburban



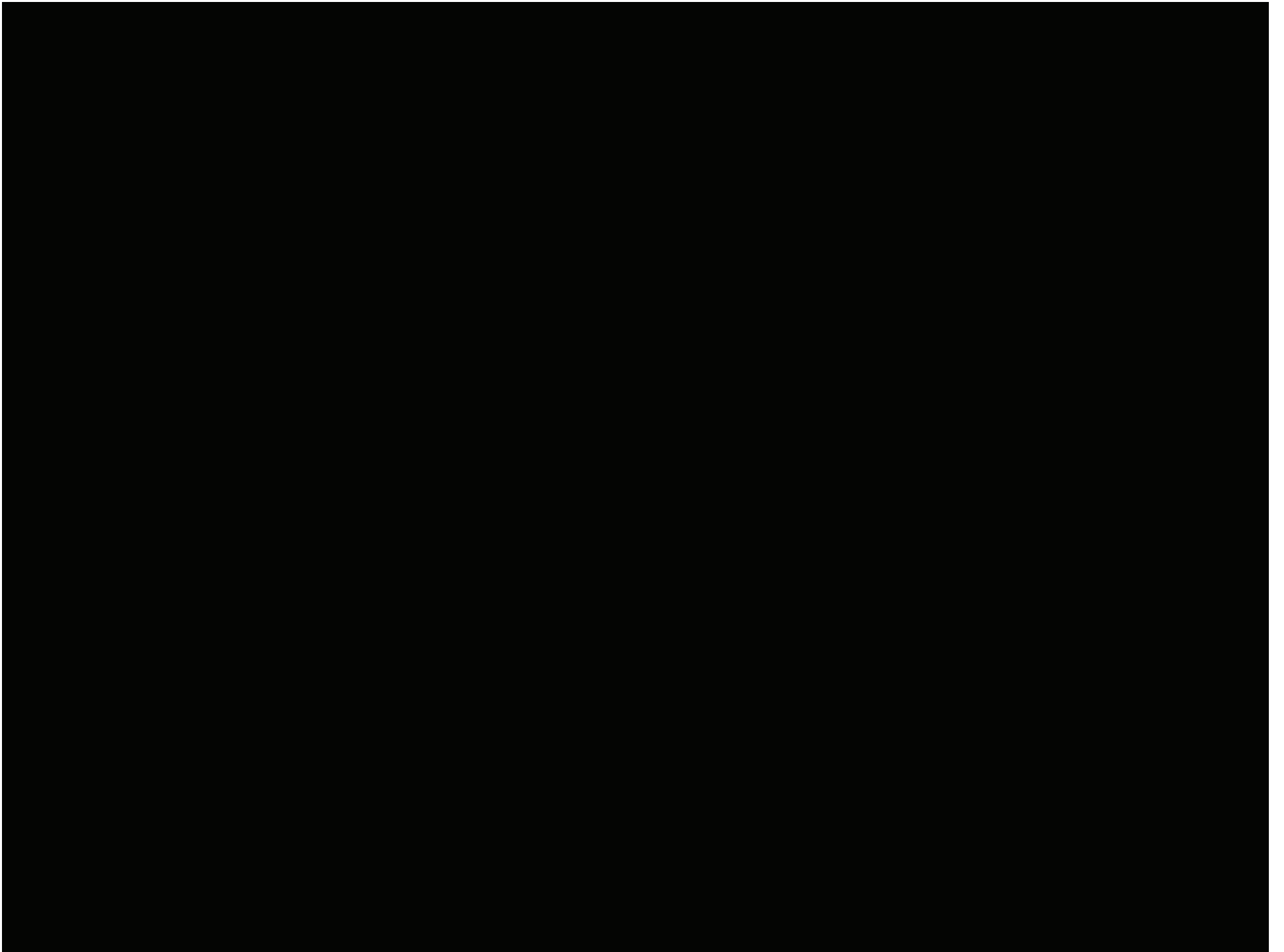
HSPA+/EV-DO

rural



LTE

NBN



Thank You

©2011 Qualcomm Incorporated. All rights reserved. Qualcomm is registered trademark of Qualcomm Incorporated. All the trademarks or brands in this document are registered by their respective owner.

QUALCOMM Incorporated, 5775 Morehouse Drive, San Diego, CA 92121-1714