

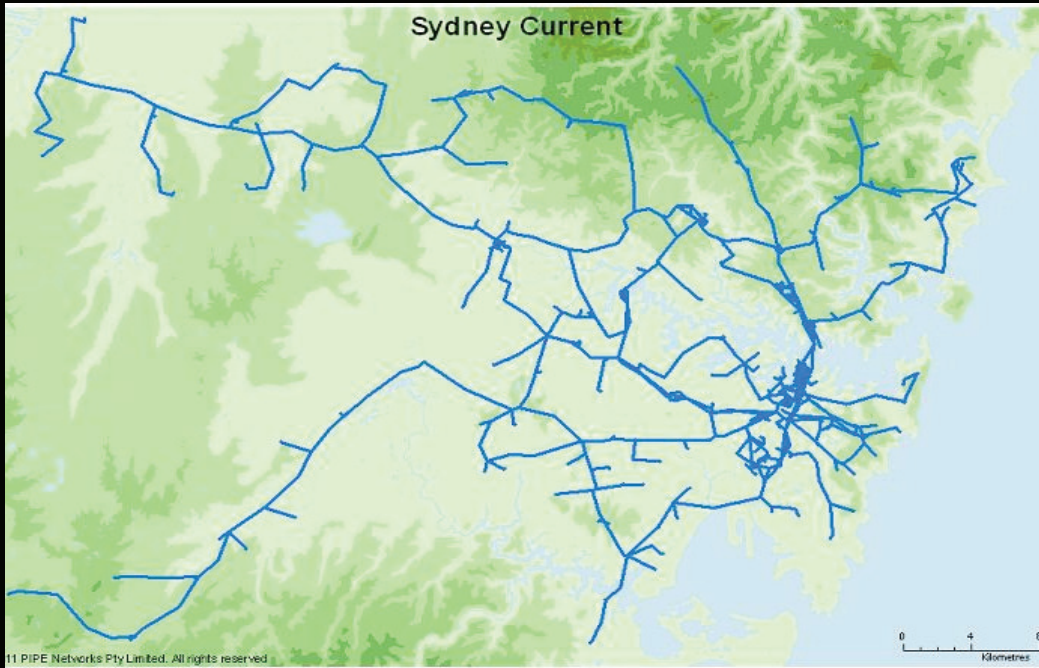


COMMSDAY Melbourne Congress

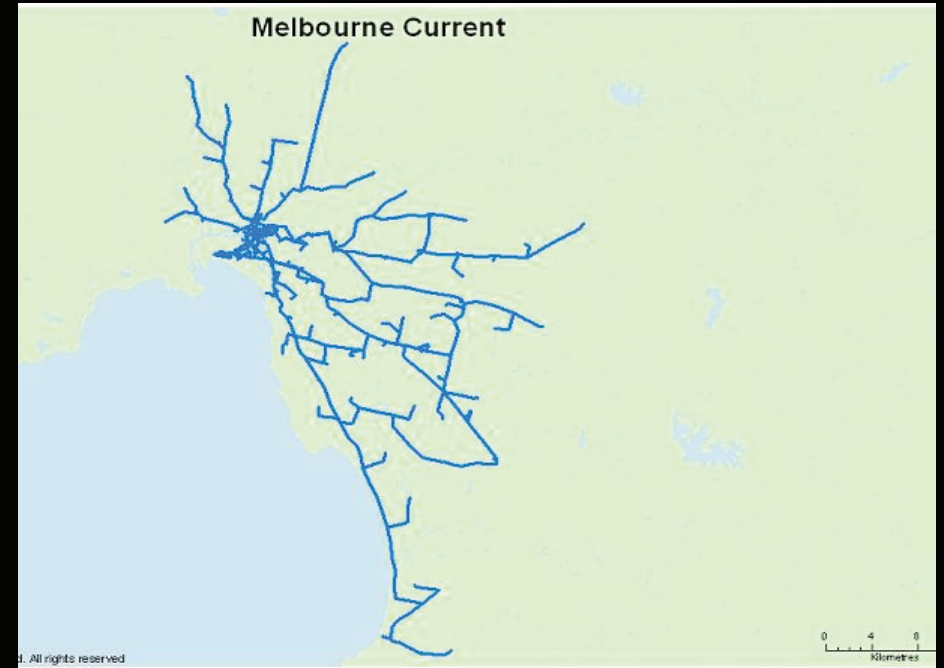
PIPE Networks

- Point-to-Point, fibre-optic service
- Hard spliced end-to-end fibre network
- Supplied 'dark'
- Almost limitless bandwidth
- Single Mode Fibre
- Stringent QA service delivery process

Network To Date

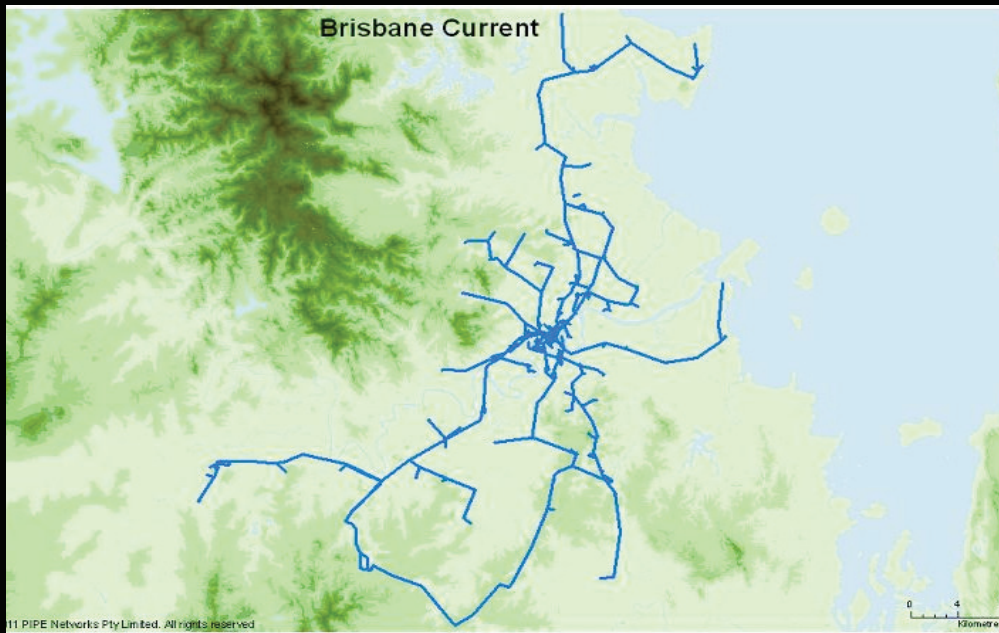


Sydney

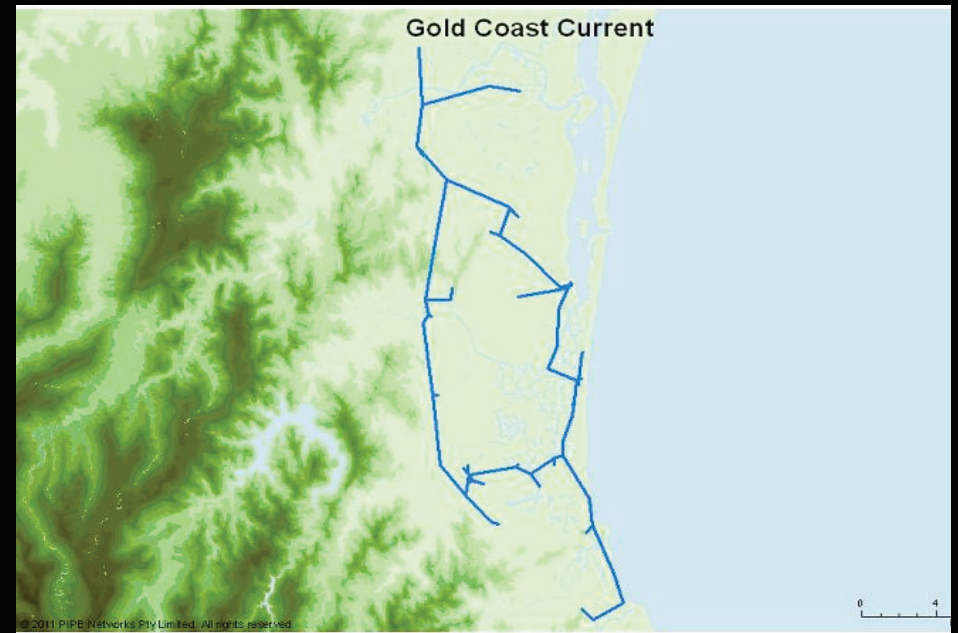


Melbourne

Network To Date



Brisbane



Gold Coast

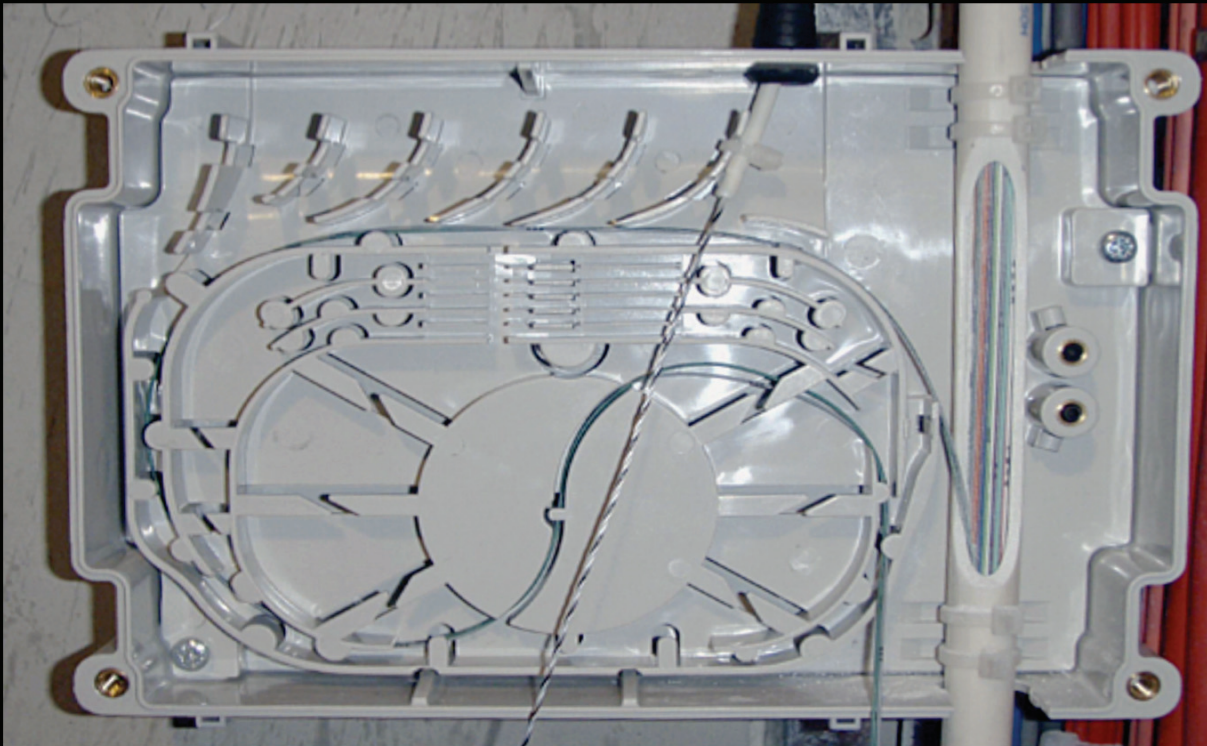
Challenges in Mass Rollouts

- Network Capacity constraints
- Passive component restrictions
- 3rd party restrictions
- Increase in Civil costs
- % Penetration – without sacrificing efficiency

New Technology to Assist Network Rollouts

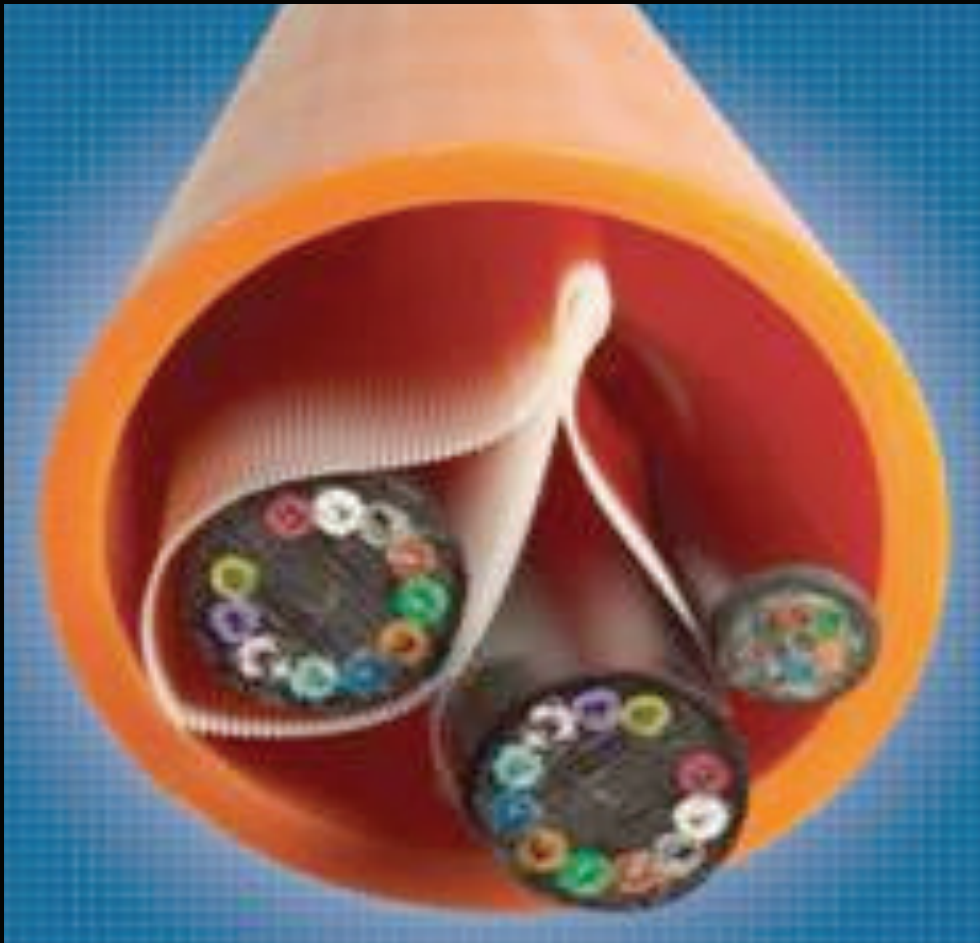
- Backwards compatibility
- Ducting options
- Form partnerships with technology vendors
- Accurate database records
- Quality vs. Quantity

Verticasa™

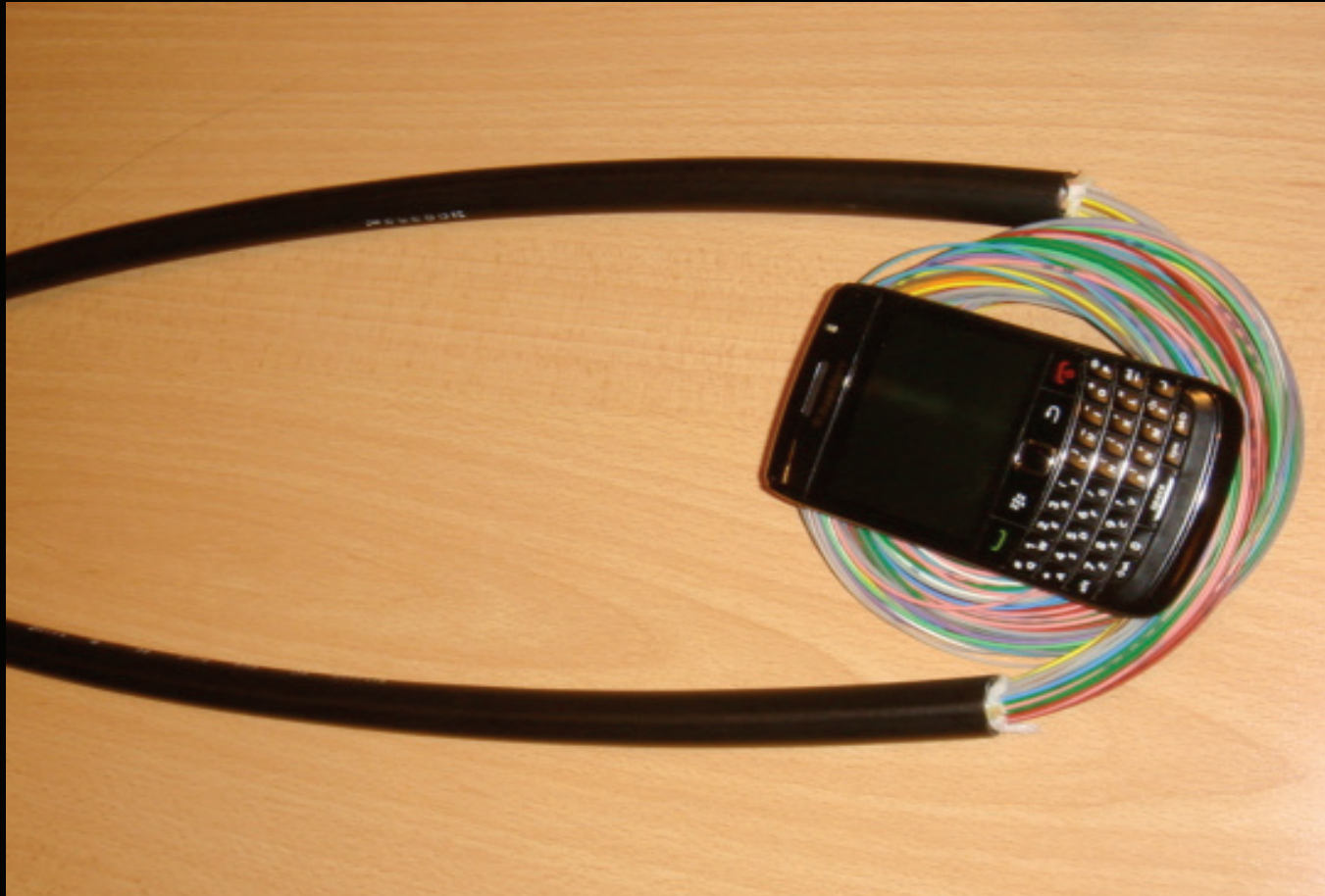


2000 pair bend-insensitive fibre

MAXCELL – Lightweight Gauze Ducting

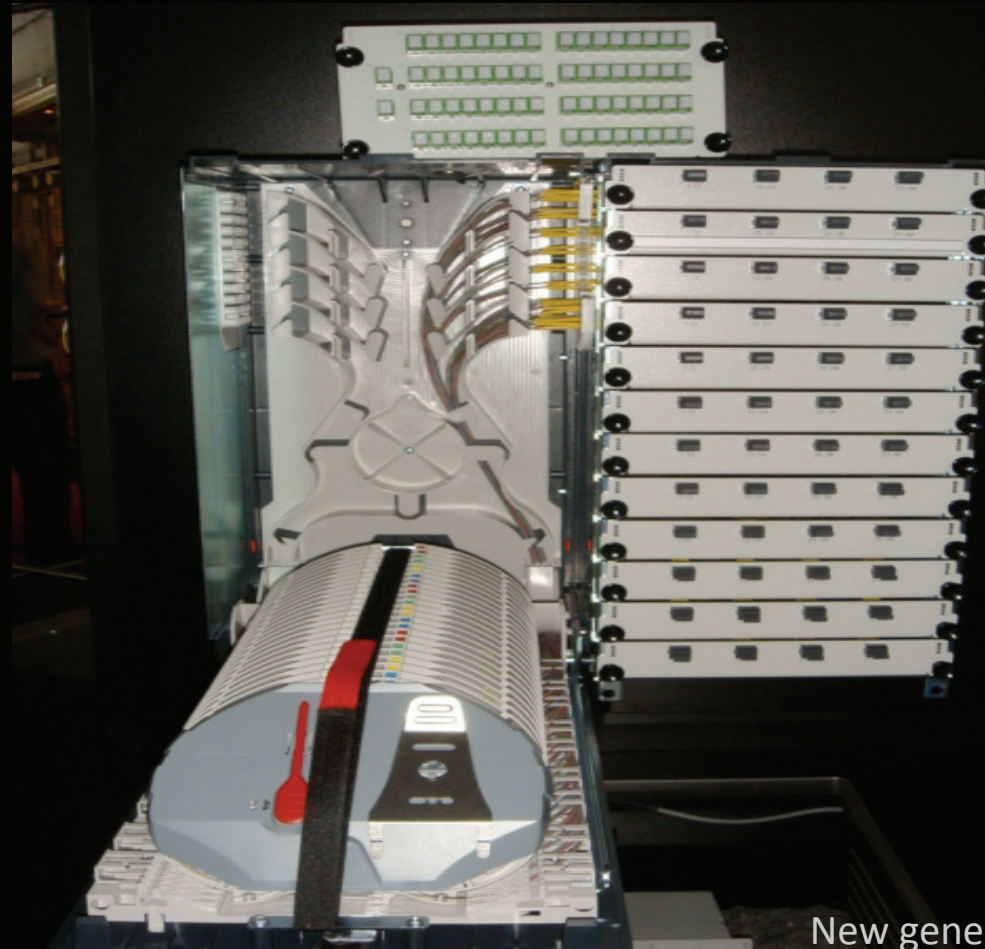


720 Pair Bend-Insensitive Fibre



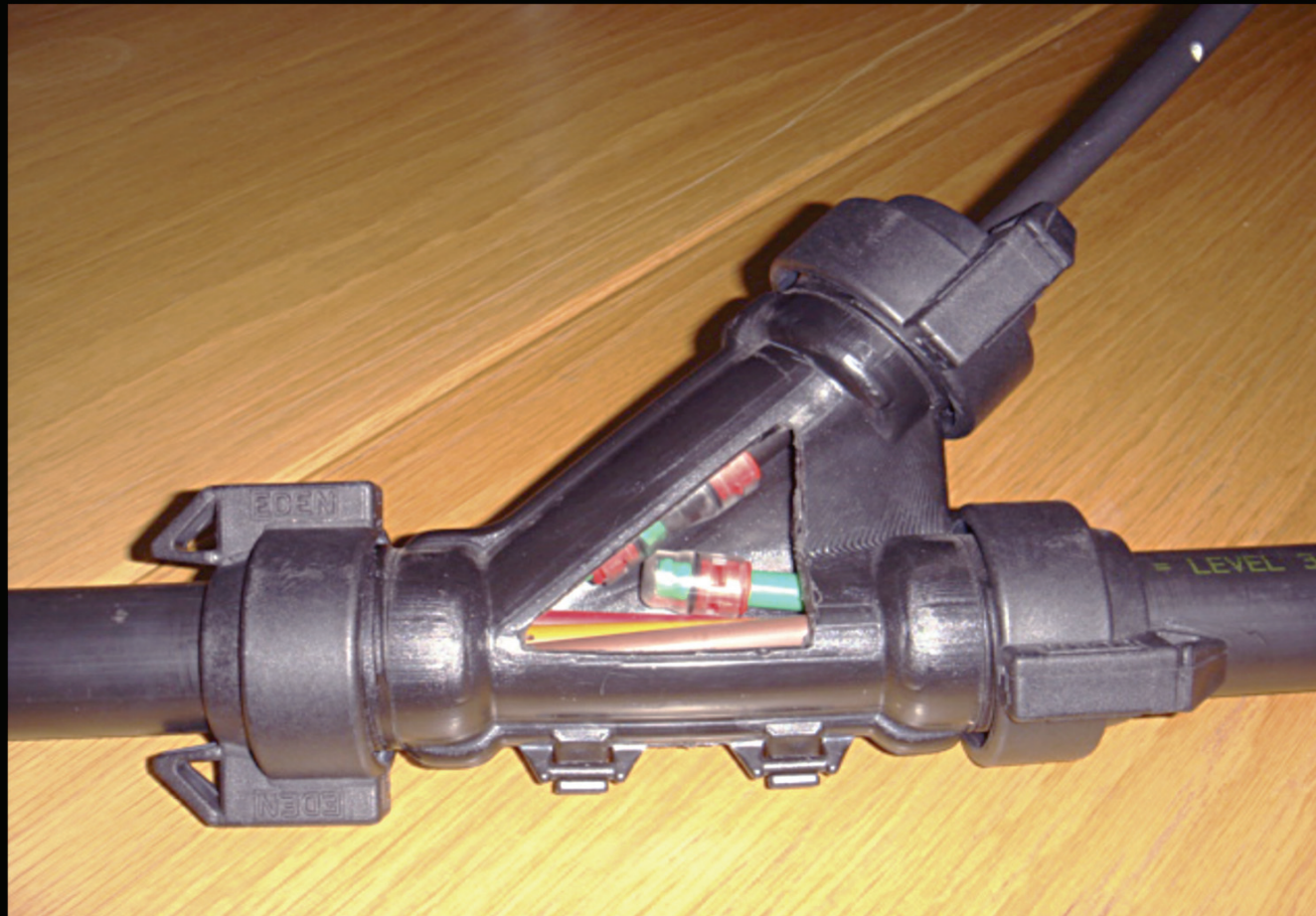
G.657.A2 Fibre

New Generation Wall Boxes



New generation wall boxes which are blown-fibre, MPO, SC or LC ready

Maximise sub-duct space

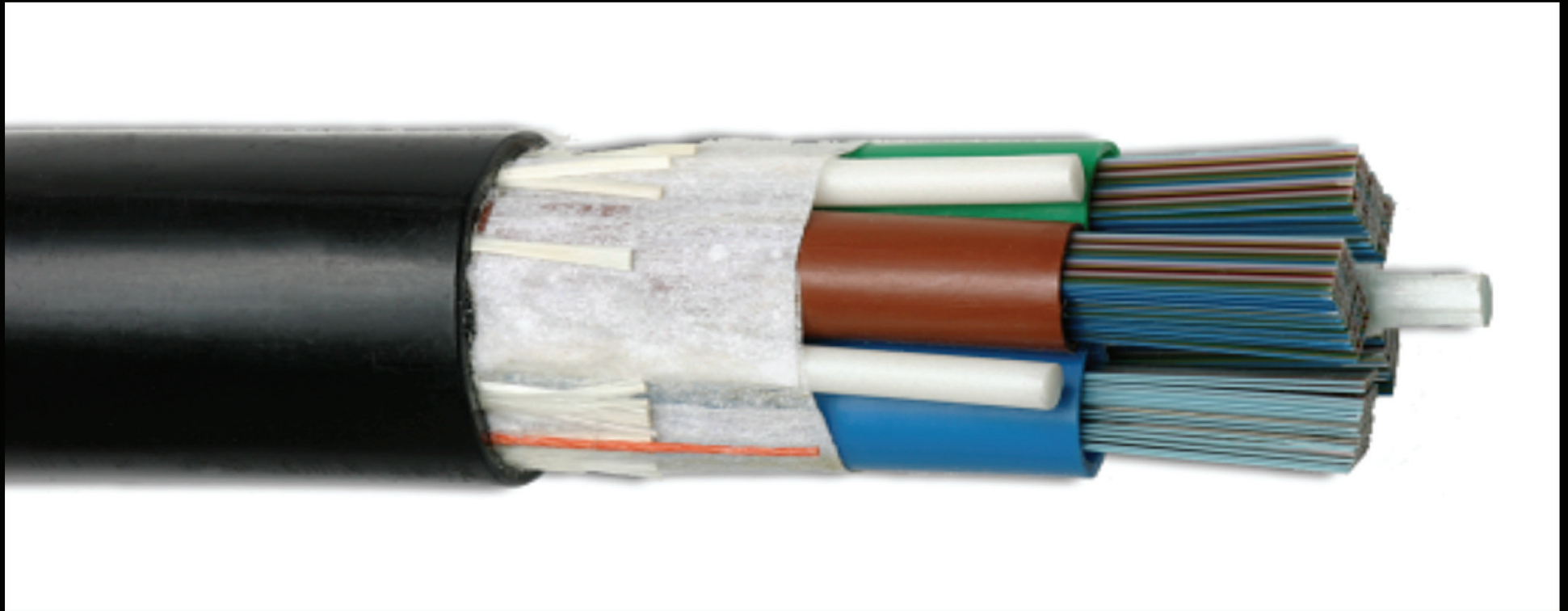


Y Junction

Armored Sewer Cables



Ribbon Fibre



1724 pair ribbonibres

Sydney Harbour Solutions



**THANKS TO YOU,
WE'VE ROLLED OUT**

PipeFibre Network

2000

KM

TIME TO GIVE BACK.

Thank You

Any questions?